

**WALLENSTEIN**

U.S. EDITION

WXR LOG SPLITTERS

**FASTER  
AND  
STRONGER**



**WALLENSTEIN**

***FIREBOLT***

THE ALL NEW **2x2 SPEED** LOG SPLITTER



# **FIREFOLT**

# **2x2 SPEED**

Compromise no more between speed or strength. Wallenstein introduces the Firebolt—the first 2x2 speed log splitter, marking the next generation of log splitter that is both faster and stronger.



# **30% FASTER**

VS PREVIOUS WX640

# **11 SEC FULL CYCLE**

# **27 TONS SPLITTING FORCE**

# **3400 PSI**



Featuring a 2-stage regenerative valve for blazing fast speed, coupled with a heavier 2-speed pump for extra power, the Firebolt offers the perfect combination of fast, efficient splitting with added strength when you need it.

Factory tuned, the Firebolt gives you full rated performance out of the box and is backed by our 5-year warranty.

# **FACTORY TUNED TO RATED PERFORMANCE**

# WXR720

HORIZONTAL

\$2,984.00

# WXR720-L

HORIZONTAL W LIGHT KIT

\$3,058.00



\*shown with optional table

# FASTER AND STRONGER

# WXR740

HORIZONTAL & VERTICAL

\$3,312.00

# WXR740-L

HORIZONTAL & VERTICAL W LIGHT KIT

\$3,386.00



\*shown with optional shelf

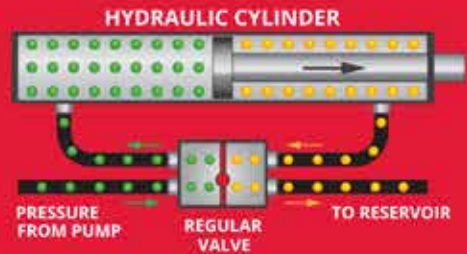
## REGENERATIVE VALVE TECHNOLOGY

Unlike normal valves, the regenerative valve pressurizes both sides of the cylinder at the same time. Since only one side has a rod, the other side has more surface area, and therefore more force. Even though both sides have equal pressure, they do not have equal force. Therefore, the rod moves outward.

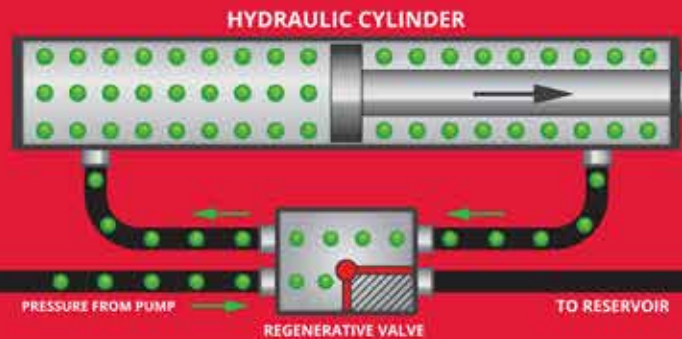


Since the entire volume of the cylinder is already full and pressurized, the pump only has to contribute the missing volume of the rod. This increases the cycle speed and thus, productivity.

## REGULAR VALVE OPERATION



## REGENERATIVE VALVE OPERATION



● PRESSURE ● NO PRESSURE

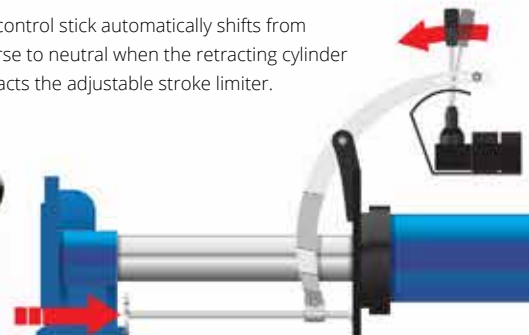
## OPTIONS

### STROKE LIMITER \$225.50

Maximize productivity when splitting shorter pieces by automatically stopping the cylinder from fully returning to the home position. This can almost cut your cycle time in half.



The control stick automatically shifts from reverse to neutral when the retracting cylinder contacts the adjustable stroke limiter.





## SPECIFICATIONS

**WXR720**

**WXR740**

Mounting	Trailer Mounted	
Engine Model	Honda GX200 - 196 CC	
Cylinder Diameter	4.5" / 114.3mm	
Cylinder Stroke	24" / 609.6mm	
Splitting Force	27 Ton / Tonne	
Valve Type	4 - Pos. Spring Loaded To Neutral	
Hydraulic Pump Type & Flow	2 Stage - 13 GPM / 49 IPM	
Bed Height	27" / 68.6 cm	
Tire Size & Type	4.80 - 8 LRB SportTrail 4 on 4" - Highway	
Safety Chains	Standard	
Ball Hitch Size	2.0"	
Auto Return to Neutral	Yes	
Average Cycle Time / Full Cycle Time	5.35 secs / 11 secs	
Options	#W4211 Clamp On Shelf Extension #W4213 Stroke Limiter #4140 - 4 Way Wedge #4130 - 4 Way Wedge #W4212 Folding Shelf	



All Wallenstein products are covered under a 5-year warranty for regular consumer use.



All Wallenstein products are Made in Canada and offer the highest quality craftsmanship.

Splitter Orientation	Horizontal	Horizontal / Vertical
Weight	460 lbs / 209 kg	570 lbs / 258.5 kg
Dimensions (L x W x H) in	76 x 40 x 44	83 x 48 x 44
Dimensions (L x W x H) cm	193 x 101 x 113	210 x 120 x 113
Wedge Height	10" / 25 cm	9" / 22 cm

## OPTIONS

Save time and avoid extra bending and lifting by keeping the pieces within reach using the available folding shelf or clamp-on shelf.

### FOLDING SHELF

WXR 720 Model

**\$479.00**



### CLAMP-ON SHELF

WXR 720 & 740 Models

**\$139.00**



### HONDA GX200

Equipped with a reliable Honda GX gasoline powered engine



### WIDE WEDGE

Forces log apart for faster splitting



### DIRECT PRESSURE

Full hydraulic force is applied inline with log



### PICK YOUR COLOUR

Available in Blue, Red, Green and Orange

# WALLENSTEIN

Manufactured by  
EMB MFG Inc.  
1-877-695-9283

4144 Boomer Line,  
St. Clements, ON N0B 2M0  
Email: sales@embmfg.com

Tel: (519) 699-9283  
Fax: (519) 699-4146  
wallensteinequipment.com